

515-40 LOADALL



**Innovation is the heart of the machine**

**At 5ft 11in tall, it's the ultimate go anywhere, mini marvel**



You want productivity and performance, you want go anywhere compact dimensions and you want a machine that will get you into the smallest of places. You want excellent lift capacity with improved lift height and forward reach. Before, all this meant using a skid steer for maneuverability, a wheeled loader for lift capacity and forklift for lift height, not anymore. The JCB 515-40 does all the tasks of these other machines and opens up the versatility of a telescopic handler to a whole new range of customers.

So how does the 515-40 do all these things? One word... innovation. Everything hangs on our revolutionary, off set, single spine chassis which has its core strength under the boom and wraps around the cab and engine. This allows us to position the cab lower than normal providing three key benefits.

First, the whole machine is low, only 5ft 11in to be exact. Second, to achieve that overall height, we didn't have to shrink the cab, so there is no compromise on operator comfort or space. And third, cab entry is now at ground level, providing easy step in, step out access. Despite ultra compact dimensions, the 515-40 packs a real punch from its small frame. Based on customer feedback we know that customers want compact dimensions and high performance. So the 515-40 delivers both, it can lift 3300 lbs to a height of 13ft 2in, and lift 1650 lbs with 8 ft of forward reach, this allows you to load a truck from one side.

The 515-40 gets you into places where no telescopic handler has gone before, poultry sheds, greenhouses, poly tunnels, parking lots, basements of large buildings, nurseries, fruit farms, vineyards, building supply, landscaping and hardscape supply yards. The 515-40 is the revolution we have all been waiting for.





**You have got into a tight space,  
now what?**

**Incredible maneuverability,  
performance and comfort....  
that's what**



The 515-40 can get you through doors and into buildings that prove impossible to access with larger machines.

The 515-40 gives bucket performance comparable to a skid steer or compact wheel loader. Plus, 4 individual hydraulic wheel motors and four wheel steer equals outstanding traction and maneuverability into and out of the tightest of corners, around pillars and through doorways. Whether you stay on concrete or take the 515-40 off road and into mud the 4 wheel drive and excellent ground clearance ensures the machine is always up to the task. The hydrostatic transmission provides equal power to all 4 wheels. This flow sharing automatically ensures that oil is sent to all 4 wheel motors and not just to the wheel that is spinning. Add in easy operation, infinite speed control and class leading fuel economy, and you have the winning formula for power, performance, productivity and versatility.

The other features that set the 515-40 apart from the competition is comfort. Thanks to the design of the chassis, the JCB engineers have been able to fit a full size cab while maintaining a very low overall height of 5ft 11in. This makes the interior spacious and the all round visibility superb.

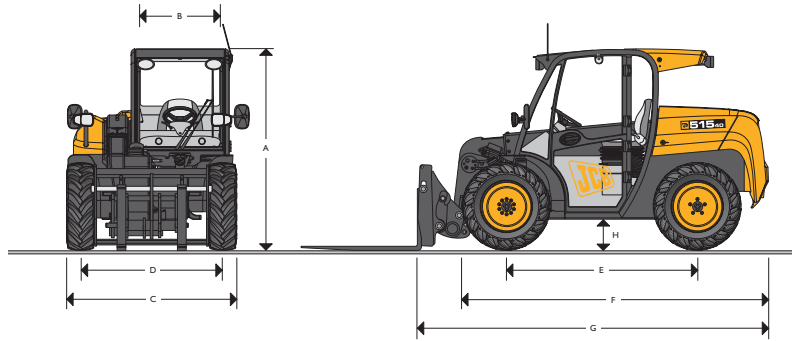
The split door and optional cab allows the operator to shut out unpleasant conditions or open the top half of the door to improve ventilation. Whether you have a cab or a canopy the operator is shielded from flying mud and debris and the side access provides safe ground level entry and exit.

Add to this that JCB pioneered the telescopic handler, over 33 years ago, and you have a machine that is packed with everything we know about building the world's best telescopic handlers.





MAX. PAYLOAD: 3300(1500 kg) MAX. LIFT HEIGHT: 13ft 2in (4m) MAX. HORSEPOWER: 50hp (37kW)



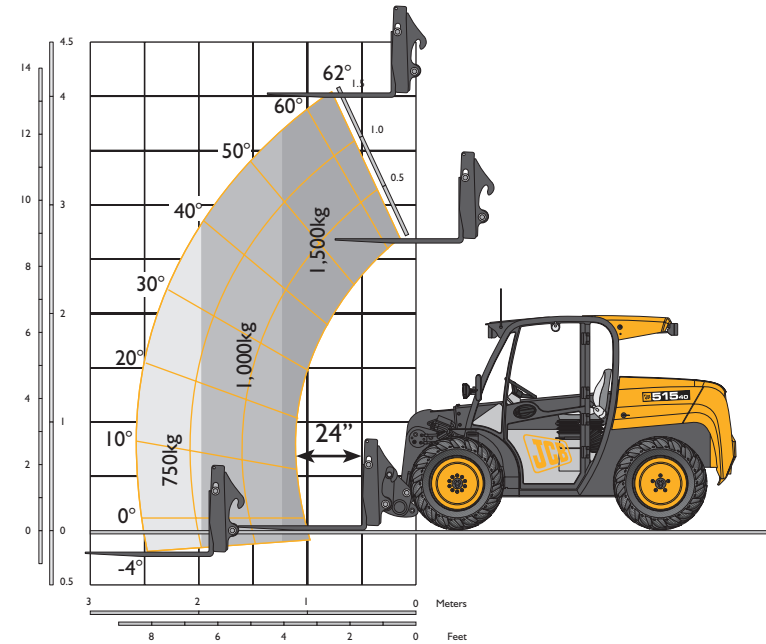
### STATIC DIMENSIONS

Machine model	515-40	
A Overall height	ft-in (m)	5-11 (1.80)
B Inside width of cab	ft-in (m)	2-10 (0.87)
C Width over tires (min)	ft-in (m)	5-1 (1.56)
D Front track	ft-in (m)	4-3 (1.30)
E Wheel base	ft-in (m)	5-9 (1.75)
F Overall length to front of tires	ft-in (m)	9-2 (2.80)
G Overall length to front of carriage	ft-in (m)	10-7 (3.23)
H Ground clearance	ft-in (m)	0-10 (0.24)
Outer turn radius over tires	in (m)	108 (2.80)
Weight	lb (kg)	7672 (3480)
Tire		10.0 / 75 - 15.3

### LIFT PERFORMANCE

Machine Model	Skid Steer Quickhitch	
	515-40	
Lift capacity at full height	lb (kg)	3300 (1500)
Lift capacity at full reach	lb (kg)	1650 (750)
Payload at 6 ft 6 in boom extension	lb (kg)	2200 (1000)
Max. lift height	ft-in (mm)	13-4 (4060)
Reach at max. lift height	ft-in (mm)	1-3 (380)
Maximum reach forward	ft-in (mm)	8-6 (2455)

### LIFT PERFORMANCE



### LOADER PERFORMANCE

Machine Model	Skid Steer Quickhitch	
	515-40	
Breakout force		7852 (3569)
Loadover height (max)	ft-in (mm)	13-2 (4015)
Rollback angle at ground	degrees	30
Carriage rotation angle (total)	degrees	131
Bucket width	in (mm)	67 (1720)

## ENGINE

		515-40
Displacement	liters	2.3
Fuel		Diesel
Cooling		Liquid
Bore	in (mm)	3.54 (90)
Stroke	in (mm)	3.54 (90)
Gross power @ 2800 rpm ISO 14396	hp (kW)	50 (37)
Gross torque @ 1800 rpm ISO 14396	Nm (lb/ft)	146 (107.68)
Emission certification		USA EPA Tier 3
Engine oil service intervals		500 hours

## TRANSMISSION

Hydrostatic transmission.

Closed loop variable displacement piston pump with twin 4 displacement transmission wheel motors.

Transmission inching facility on operation of a combined inching and braking pedal.

**Front and rear drive axles:** Permanent 4WS and 4WD.

– Rear axle oscillation.

– Automatic torque transfer system between front and back axles.

– Maximum travel speed 12.4 mph.

## BRAKES

**Service brake:** Hydraulically activated drum brake on the front wheel motors.

**Parking brake:** Manually operated drum brake on the front wheel motors.

## BOOM AND CARRIAGE

Boom is manufactured from high tensile steel.

Low maintenance, hard wearing pads.

Universal Skidsteer quick attach with manual pin locking, accepts bucket, forkframe with integral pallet forks and a wide range of attachments.

## SERVICE CAPACITIES

		gal (Liters)
Fuel tank		13 (50)
Hydraulic tank		10.5 (38)

## ELECTRICS

12 V negative earth, 60 AH heavy-duty battery. 80 amp alternator.

## HYDRAULICS

Machine model	515-40	
Operating system pressure - main service pump	psi (bar)	3336 (230)
Flow at system pressure (@ 2800rpm)	gpm(L)	12.5 (48)
Cycle times	seconds	
Boom raise	7.3	
Boom lower	5.4	
Extend	5.8	
Retract	3.7	
Bucket dump	2.8	
Bucket crowd	3.9	

## SAFETY CHECK VALVES

Fitted to crowd, extension and lift rams.

## CAB

Quiet, safe and comfortable cab conforms to ROPS ISO3471 and FOPS ISO 3449. Internal noise 85 Lpa. Radio console. Arm rest. Tinted glass all round with laminated front and roof screen. Front, rear screen wash/wipe and heater/screen demister.

Opening door window. Optional air conditioning or face-level fan. Visual warning system for coolant temperature, engine oil pressure, air cleaner, battery charge, transmission oil pressure, engine temperature, fuel gauge and hour meter.

Boom control lever incorporating forward/reverse switch. Throttle and brake pedals floor mounted. Optional fabric or vinyl suspension seat with side mounted park brake lever.

## STEERING

Full power hydrostatic steering. Permanent 4WS with 32° lock front and rear axles provides exceptional manoeuvrability.

## OPTIONS AND ACCESSORIES

**Options:** Road lights, work lights, front screen guard, sun blind, chaff guard, canopy: Air conditioning, face level fan.

**Attachments:** Skid Steer Quickhitch: GP shovel with teeth or toeplate, 6-in-1 shovel, Industrial or Floating forks, Industrial grapple, Sweeper/Collector, Muck fork and grab, Low back shovel.

## Connect with JCB



[jcbinc.wordpress.com](http://jcbinc.wordpress.com)

JCB Headquarters Savannah, 2000 Bamford Blvd., Savannah, Georgia, 31322,  
Tel: (912) 447-2000 Web: [www.jcbna.com](http://www.jcbna.com)

JCB reserves the right to change specifications without notice. Some machines shown within this brochure are fitted with optional equipment which may vary between dealerships.

